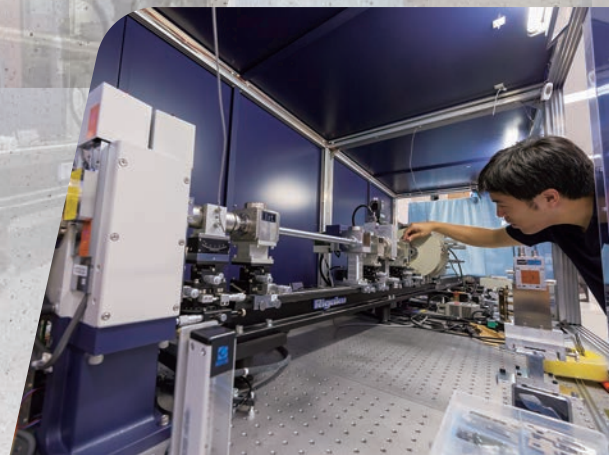




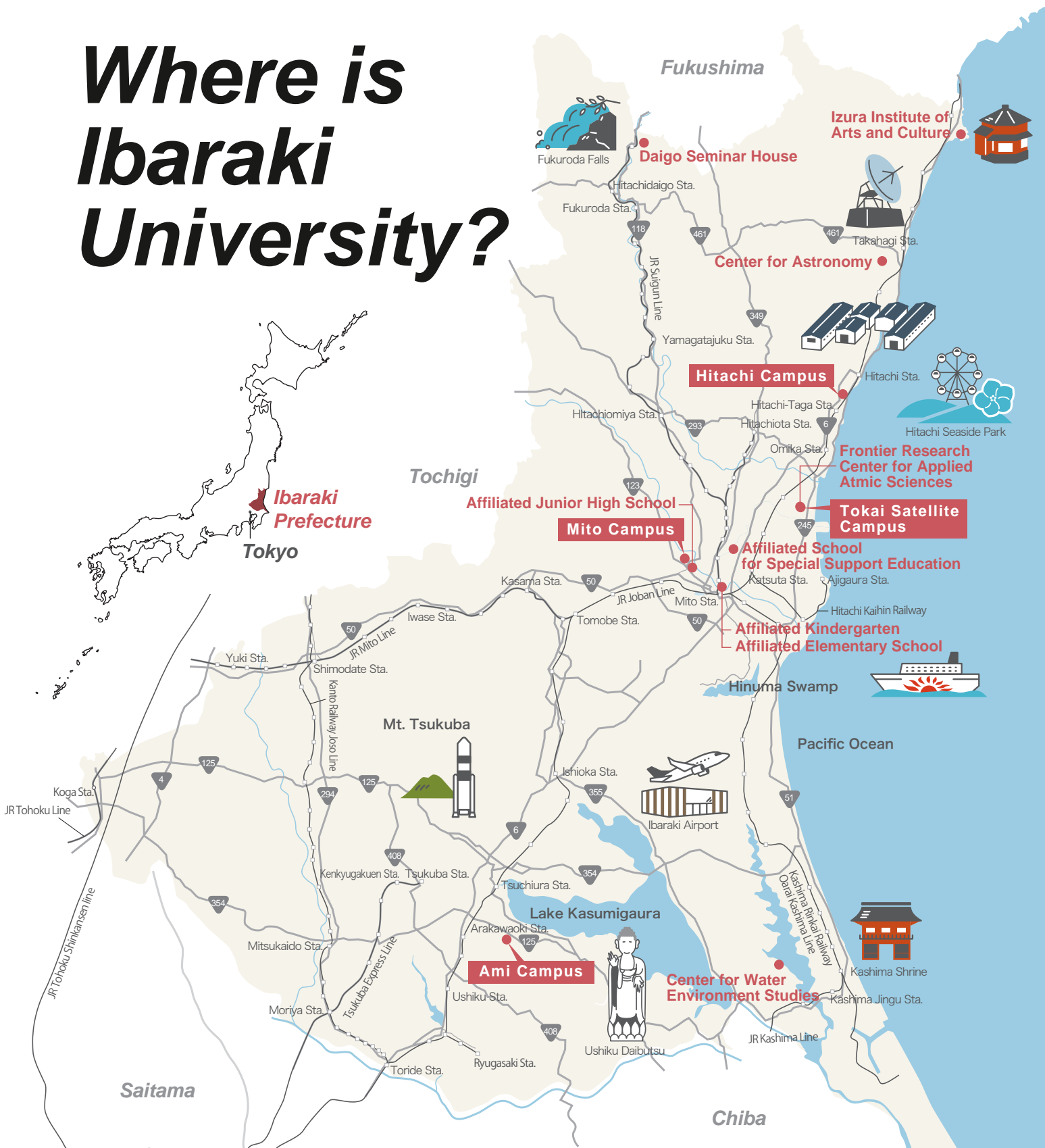
IBARAKI

University, JAPAN

2019-2020



Where is Ibaraki University?



Access to Ibaraki University

Mito Campus

Take the Ibaraki-Kotsu bus bound for Ibadai (via Sakae-cho) from JR Mito Sta.(North Gate) Bus Terminal 7 and get off at "Ibadai-Mae" (about 25 min.)

Hitachi Campus

1. Take the Hitachi-Dentetsu bus bound for Heiwadai3 or Kosakidai4 via Chuo-sen from JR Hitachi Sta.(Central Gate), and get off at "Ibadai-Mae" (about 10 min.)
2. Take the Hitachi-Dentetsu bus bound for Hitachi-Sta.3 or 4 via Chuo-sen from JR Hitachi-Taga Sta, and get off at "Ibadai-Mae" (about 10 min.)

Ami Campus

Take the Kanto-Tetsudo bus bound for Ami-Chuo-Kominkan from JR Tsuchiura Sta.(West Gate) Bus Terminal 1 and get off at "Ibadai-mae" (about 20 min.)

- Administration Bureau
- College of Humanities and Social Sciences
- College of Education
- College of Science
- University Library
- Institute for Liberal Arts Education
- Research and Innovation Center
- Admission Center
- University Health Center
- Center for Teacher Education
- Center for Instrumental Analysis
- Institute for Global Change Adaptation Science (ICAS)
- Social Collaboration Center
- International House for Foreign Students (977, Hori, Mito, 310-0903)

- College of Agriculture
- Ami Branch of University Library
- Ami Branch of Center for Information Technology
- Gene Research Center
- Ami Branch of Social Collaboration Center
- Center for International Field Agriculture Research & Education (4668-1, Ami, Ami, Inashiki, 300-0331)
- Food Innovation Center

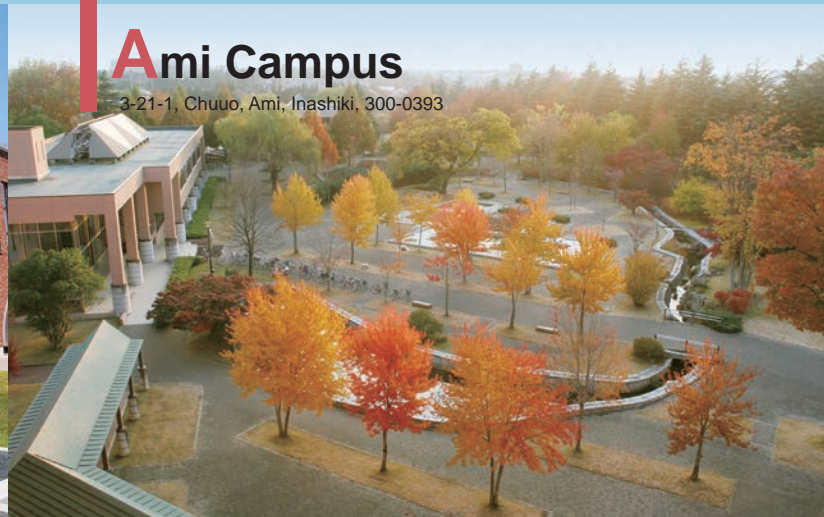
Mito Campus

2-1-1, Bunkyo, Mito, 310-8512



Ami Campus

3-21-1, Chuuo, Ami, Inashiki, 300-0393



Hitachi Campus

4-12-1, Nakanarusawa, Hitachi, 316-8511



Tokai Satellite Campus

162-1, Shirakata, Tokai, Naka, 319-1106



- College of Engineering
- Hitachi Branch of University Library
- Center for Information Technology
- Hitachi Branch of Social Collaboration Center

- Frontier Research Center for Applied Atomic Sciences

Ibaraki University is located in Ibaraki Prefecture, facing the Pacific Ocean to the east and bordering the Tokyo metropolitan area to the south. We have campus locations in the Northern, Central, and Southern regions of the prefecture and we provide unique education and research opportunities by utilizing our own regional characteristics.

Other

- Affiliated Kindergarten 2-6-8, Sannomaru, Mito, 310-0011
- Affiliated Elementary School 2-6-8, Sannomaru, Mito, 310-0011
- Affiliated Junior High School 1-3-32, Bunkyo, Mito, 310-0056
- Affiliated School for Special Education 1955, Tsuda, Hitachinaka, 312-0032

- Center for Water Environment Studies 1375, Oou, Itako, 311-2402
- Center for Astronomy 627-1, Ishitaki-Kamidai, Takahagi, 318-0022
- Izura Institute of Arts and Culture 727-2, Izura, Ootsu, Kitaibaraki, 319-1703
- Daigo Seminar House 5653-10, Shimonomiya, Daigo, Kuji, 319-3555

Education

Colleges

Diploma Policy



Large perspective of the world



Knowledge and skills in a speciality field



Problem-solving ability and communication skills



Attitude as a conscious member of society



Focus on regional revitalization

Humanities and Social Sciences
Mito Campus

[Contemporary Social Studies] [Law, Economics and Management] [Humanities]

■ Degree : Bachelor of Contemporary Social Studies
Bachelor of Social Science
Bachelor of Arts in Humanities

Education
Mito Campus

[Teacher Training Course] [Course for School Nurse Teacher]

■ Degree : Bachelor of Education

Science
Mito Campus

[Sciences]

■ Degree : Bachelor of Science

Engineering
Hitachi Campus

[Mechanical Systems Engineering] [Electrical and Electronic Systems Engineering] [Materials Science & Engineering] [Computer and Information Sciences] [Urban and Civil Engineering]

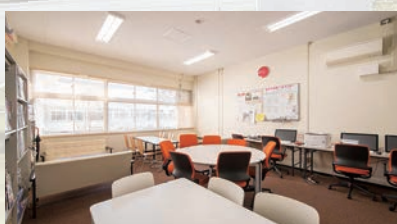
■ Degree : Bachelor of Engineering

Agriculture
Ami Campus

[Food and Life Science] [Regional and Comprehensive Agriculture]

■ Degree : Bachelor of Agriculture

Campus Facilities for International Students



International Lounge



International House for Overseas Residents



Student Dormitory

Our educational goal is to nurture in students the ability to respond proactively to changes in the 21st century and to forge their own paths to the future. We obtain our goals with 5 colleges and 4 graduate schools. We developed a diploma policy consisting of five foundational academic skills and we are engaging in its educational activities through unique programs that encourage proactive learning.

Graduate Schools / Diploma Course for Graduate Students

Humanities and Social Sciences Mito Campus

[Cultural Sciences]
[Social Sciences]

■ Degree : Master of Arts

Science and Engineering

Mito Campus, Hitachi Campus and Other Areas

Master's Program:

[Quantum Beam Science]
[Science]
[Mechanical Engineering]
[Electrical and Electronic Engineering]
[Urban and Civil Engineering]
[Computer and Information Sciences]

■ Degree :
Master of Science, Master of Engineering

Doctoral Program:

[Quantum Beam Science]
[Complex Systems Science]
[Society's Infrastructure Systems Science]

■ Degree :
Doctor of Science, Doctor of Engineering,
Doctor of Philosophy

Agriculture Ami Campus

[Agriculture]

■ Degree : Master of Agriculture

Education Mito Campus

Master's Program:

[Education of Children with Disabilities]
[Education for School Subjects]
[School Nurse Education]
[Clinical Psychology for School]

■ Degree : Master of Education

Professional Degree Program:

[Professional Practice in Education]

■ Degree : Master of Education
(Professional Degree Program)

United Graduated School of Agricultural Science

[Biological Production Science]
[Applied Life Science]
[Symbiotic Science of Environment and Natural Resources]
[Agricultural and Environmental Engineering]
[Science of Agricultural Economy and Symbiotics Society]

■ Degree : Doctor of Agriculture

Advanced Course for Special Support Education Mito Campus

[Education for Children with Intellectual Disabilities]

iOP : Ibaraki University's educational collaboration with regional and global partners

Ibaraki University offers a unique education system composed of an integrated off-campus study program named "internship off-campus program (iOP)" in addition to its standard quarter-based curriculum. The iOP program, offered during the 3rd quarter of the junior year, enables students to select from a variety of off-campus activities such as studying abroad, experiencing internships at corporations or municipalities, engaging in volunteer activities or conducting independent research or fieldwork for the entire quarter. Students can select, plan and undertake their iOP at any of Ibaraki University's partners institutions. This includes 69 partner universities worldwide, 50 reputable local companies and 58 municipal governments and regional organizations. The aim of the iOP is to provide a platform for students to hone their communication and problem-solving skills; a core competency that is required in today's rapidly changing world.



Research



Estimating the impact of climate change and research for creating a sustainable society

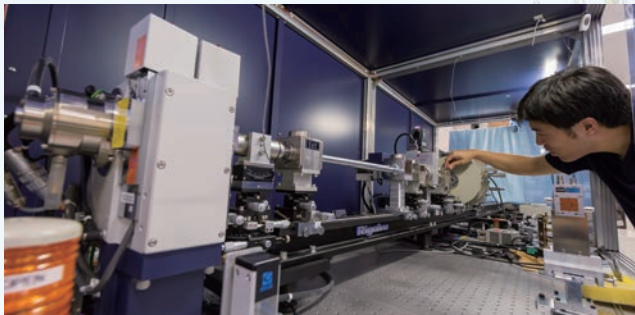
Ibaraki University established The Institute for Global Change Adaptation Science (ICAS) in 2006 and is promoting investigation and research on the effects of climate change and adaptation measures in the Asia-Pacific region. We serve as the partner university in the master's program 'Climate Change and Development Program' at Vietnam - Japan University (VJU) opened in 2018 and contribute for a sustainable society with the resources of our research and education.



Vietnam-Japan University Climate Change and Development Program

Vietnam-Japan University (Graduate School of Sustainability Science) is a new initiative being established with the participation and cooperation of multiple universities in both countries under an agreement between the Japanese and Vietnamese governments. Ibaraki University has been the host university for the Climate Change and Development Program since 2018.

The curriculum for this program includes overseas internship at Ibaraki university.

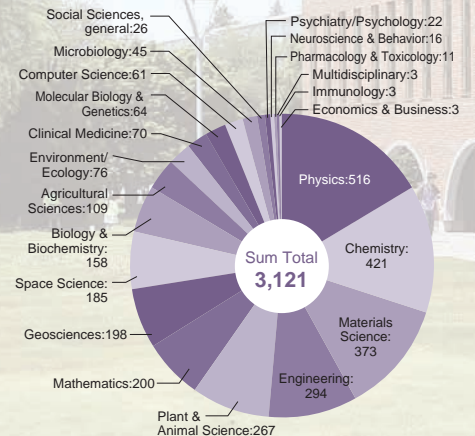
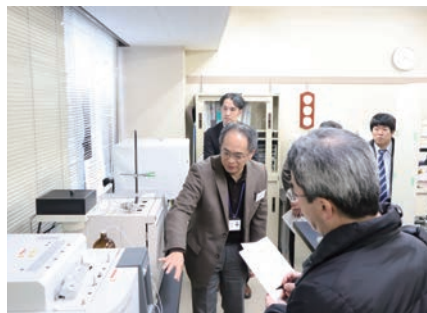


Advanced research in quantum beam science

Ibaraki University has a satellite campus adjacent to the world's leading high intensity proton accelerator facility (J-PARC). Our strength is the research of quantum beam science (ex.X-rays, neutrons, muon) and the development of researcher and engineer. We hold an international symposium of quantum beam science every year and are recognized as the leader for research in quantum beam science.

iRIC (Research and Innovation Center, Ibaraki University)

iRIC was established in 2018 as the organization responsible for the research system at Ibaraki University. It consists of three divisions: industry-academia-government division; academic research division; and research compliance division. iRIC retains research support staff who work to coordinate research support and joint research studies.



Research areas of publications in Ibaraki University, 2009-2019 (InCites)

Ibaraki University undertakes research with a whole university approach to promote interaction between colleges and various sectors, and to encourage an unique cross-disciplinary research. In Ibaraki Prefecture, there are unique research facilities such as Tokai Village with a group of nuclear related facilities and Tsukuba Science City, and research efforts in cooperation with these facilities are our global strengths.

Topics



Research on regional issues and local history

We will conduct systematic research on regional issues such as the revitalization of the mountainous and depopulated areas. In addition, we promote regional history research through activities, such as rescue of damaged materials.



Educational research crossed subjects / territories

We value cross-disciplinary research that contributes to solve complex issues of modern education.



Front-line space science research

We are involved in research using radio telescopes, and international plans for next-generation gamma-ray observatories. With National observatory and other universities, we contribute an important part in the global research network.



Development of regional industry innovation

In order to contribute to regional industry innovation, we manage cooperation with local research institutions and companies, and conduct research in engineering fields such as metal material analysis and process development.



Food innovation

Safe and secure food to all over the world
Based on the Center for International Field Agriculture Research and Education that acquired GAP and the Food Innovation Center, we will establish a comprehensive field of food life sciences.



Regional branding based on heritages regarding Okakura Kakuzo(Tenshin)

We hold and maintain the Okakura Kakuzo (Tenshin) heritages, including Rokkakudo. We will contribute to regional revitalization based on the assets and will pursue research in art and culture.

International Exchange Program

As of May 23, 2019

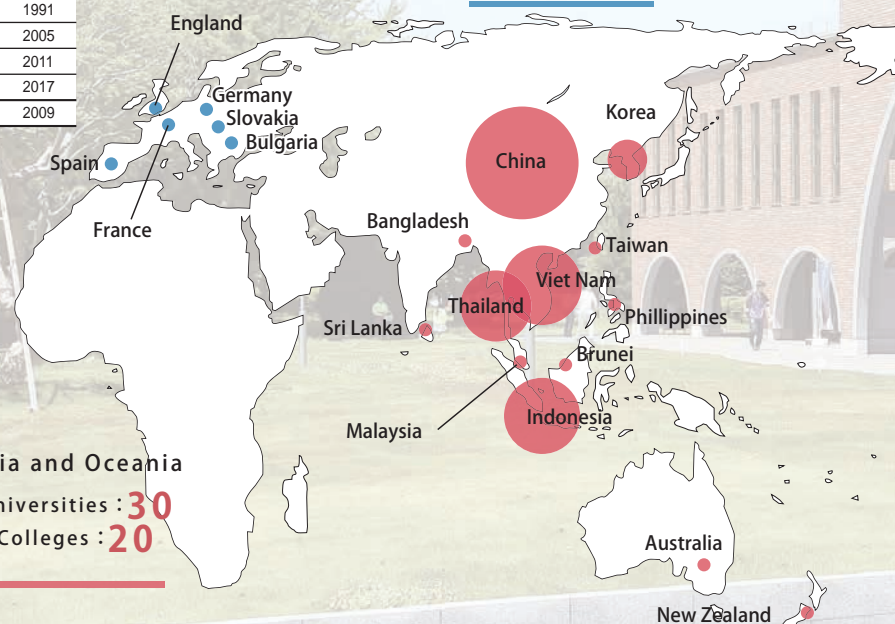
Countries / Area	University	Date of Agreement
North America and South America		
USA	● Eastern Washington University	1999
	■ Tennessee Technological University	2013
	■ The Pennsylvania State University	2016*
	● University of Alabama at Birmingham	2011*
	● University of Wisconsin, Superior	2006*
	● Montana State University	2017
Canada	■ Idaho State University	2017
	■ School of Continuing Studies at McGill University	2011
Peru	○ TRIUMF	2017
	○ Universidad Nacional Agraria La Molina	2001
Europe		
Spain	■ Alcala University	2014
France	● L'Institut de Radioprotection et de Surete Nucleaire(IRSN)	2016
	○ Universite de Rennes 1	2017
United Kingdom	● University of Worcester	2016
	■ Gloucestershire College	2015
	○ Newcastle University	2018
Republic of Bulgaria	● Sofia University	2015
Germany	● Forschungszentrum Julich GmbH	2018
Slovakia	○ Comenius University	2019
Oceania		
Australia	● University of Technology, Sydney	2016
	○ ANSTO	2019
	● Curtin University	2019
New Zealand	○ College of Science, University of Canterbury	2017
East Asia		
China	● Fudan University	1988
	● University of International Relations	2010
	● Zhejiang University	2002
	● Inner Mongolia University for the Nationalities	2016
	● East China Normal University	2017
	○ College of Nuclear Science and Technology, Beijing Normal University	2008
	○ Hebei University of Technology	2006
	○ Institute of Theoretical Physics Academia Sinica	1998
	○ Nanjing Agricultural University	2001
	○ Northwest A&F University	2010
○ Wuhan University of Science & Technology	2006	
Korea	● Chungbuk National University	1991
	● Inje University	2005
	■ Kookmin University	2011
	○ the Radiation Science, Korea Atomis Energy Research Institute	2017
Taiwan	■ Providence University	2009

Countries / Area	University	Date of Agreement
South Asia		
Bangladesh	○ Bangladesh Agricultural University	2006
Sri Lanka	○ Faculty of Agriculture, University of Ruhuna	2009
Southeast Asia		
Indonesia	● Bogor Agricultural University	2009*
	● Gadjah Mada University	2010*
	● Sriwijaya University	2015
	● Udayana University	2009*
	■ Universitas Pendidikan Indonesia	2011
	● Universitas Jenderal Soedirman	2016
	● Andalas University	2017
	● Directorate General of Resources for Science, Technology, and Higher Education	2018
	○ Institute for Research and Community Service Institut Teknologi Bandung	2014
	○ The Indonesian Agency for Agricultural Research and Development of the Ministry of Agriculture of the Republic of Indonesia	2016
Viet Nam	● Vietnam National University, Hanoi	2010
	● Vietnam-Japan University	2018
	○ Hue University, College of Foreign Language	2013
	○ Institute for Northeast Asian Studies Vietnam Academy of Social Sciences	2015
	○ VNU University of Science, Vietnam National University, Hanoi	2014
	○ Hanoi University	2019
Kingdom of Thailand	■ Dhurakij Pundit University	2015*
	● Kasetsart University	2014*
	● Phuket Rajabhat University	2013
	● Chiang Mai University	2016
	● King Mongkut's University of Technology Thonburi	2018
	○ Faculty of Agriculture, Khon Kaen University	2011
	○ Faculty of Science, Ubon Ratchathani University	2017
	○ Faculty of Agriculture, Natural Resources and Environment, Naresuan University	2018
Philippines	● De La Salle University	1997
Malaysia	● Universiti Sains Malaysia	2016
	● Universiti Kebangsaan Malaysia	2019
Brunei Darussalam	● Universiti Brunei Darussalam	2016

- Agreement with Universities
- Agreement with Colleges Institutes
- Student Exchange Agreement
- * Re- signed

Europe
Universities : 4
College : 5

Asia and Oceania
Universities : 30
Colleges : 20



Academic Exchange Agreements with Foreign Universities and Colleges

Ibaraki University, as a bridge for international exchange, has partnership agreements with 69 universities and institutes in 22 countries and regions, through which we conduct academic and student exchanges.

By communicating its educational and research outcomes widely to the international community and engaging in international exchange and joint research for students and faculty, Ibaraki University strives to promote education and academic research that is of an international standard, and to share the outcomes of that education and research with the world. We're promoting international exchange and joint research with our partner universities and institutes in 22 countries.



ASEAN International Mobility for Students (AIMS) Program

AIMS program is an international joint education program based in Asia that came out of a joint student exchange support project by the Malaysian, Indonesian and Thai governments. Ibaraki University has participated in AIMS since 2013 aiming to improve students' language and communications skills and to develop people who will be able to engage with society with a global outlook.



Overseas Internships

Ibaraki University offers its students overseas work experience and internship programs. Individual colleges also run their own overseas internship programs in their specialist areas in association with universities in various countries.

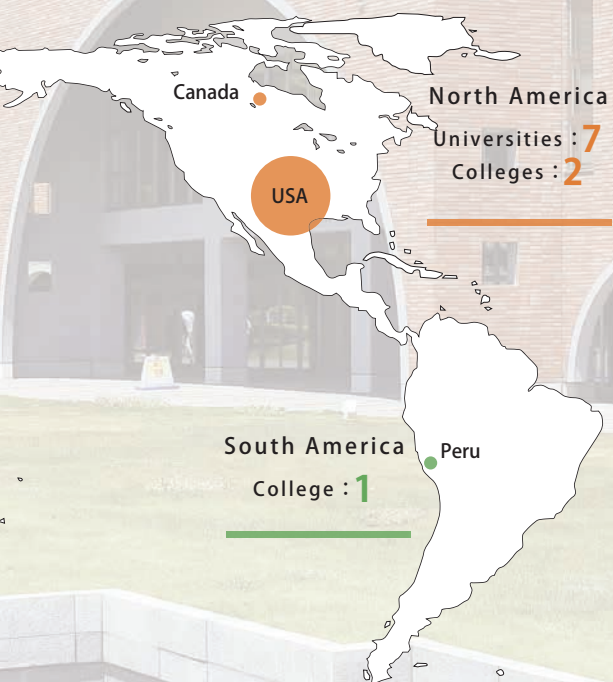
Japanese Language and Culture Program

This program provides students with an opportunity to learn and to improve their Japanese language skills and to deepen their understanding of Japanese culture and society. Students take Japanese language classes, and Japan-related classes taught in English. Intermediate-advanced students can also take college classes taught in Japanese. A wide range of cultural and educational activities are also provided during the semester.



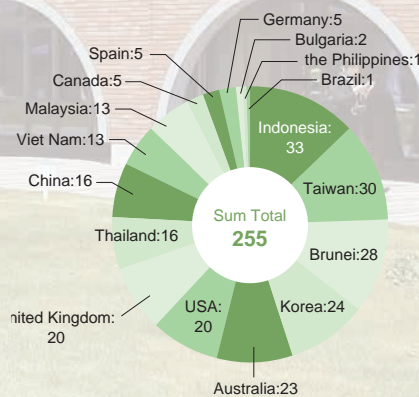
Partner Universities Exchange Program

Ibaraki University has expanded a global network, forging close ties with universities worldwide and is committed to increase student mobility between its partner institutions.

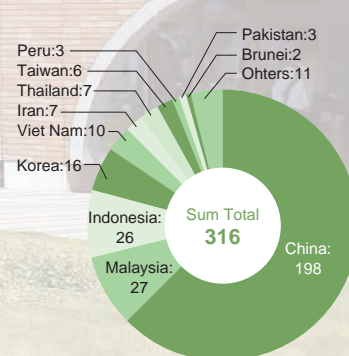


Outgoing and Incoming International Students

Outgoing International Students (Academic Year of 2018)



Incoming International Students (As of May 1, 2019)



Facts & Figures

Number of Students

Colleges

As of May 1, 2019

Colleges	Departments	Total	Sum Total
Humanities and Social Sciences	Department of Contemporary Social Studies	407 (246)	1,123 (619)
	Department of Law, Economics and Management	375 (151)	
	Department of Humanities	341 (222)	
[Humanities]	[Humanities and Communication Studies]	202 (137)	889 (493)
	[Social Sciences]	281 (132)	
Education	Teacher Training Course	1,000 (568)	1,272 (798)
	Course for School Nurse Teacher	148 (147)	
	[Course for Information and Culture]	75 (57)	
	[Course for Human Environmental Education]	49 (26)	
Science	Sciences	913 (266)	913 (266)
Engineering	Mechanical Systems Engineering	270 (21)	2,383 (289)
	Electrical and Electronic Systems Engineering	255 (19)	
	Materials Science and Engineering	218 (61)	
	Computer and Information Sciences	352 (23)	
	Urban and Civil Engineering	259 (56)	
	Mechanical Systems Engineering (B)	81 (5)	
	[Mechanical Engineering]	213 (6)	
	Biomolecular Functional Engineering	143 (43)	
	Materials Science and Engineering	85 (11)	
	Electrical and Electronic Engineering	185 (13)	
	Media and Telecommunications Engineering	105 (14)	
	Intelligent Systems Engineering	123 (9)	
	[Intelligent Systems Engineering (B)]	94 (8)	
	Agriculture	Food and Life Science	
Regional and Comprehensive Agriculture		256 (121)	
[Biological Production Science]		52 (32)	
Bioresource Science		45 (27)	
	[Regional Environmental Science]	42 (19)	
Sum Total			6,818 (2,597)

Note: 1 Departments in [] are discontinued. 2 The figures include international students.
3 The figures in parentheses indicate the number of female students.

Graduate Schools

As of May 1, 2019

Graduate Schools	Programs	Total
Humanities and Social Sciences	Master's Program	58 (30)
Education	Master's Program	77 (37)
	Professional Degree Program	31 (9)
Science and Engineering	Master's Program	806 (90)
	Doctoral Program	94 (18)
Agriculture	Master's Program	100 (47)
Sum Total		1,166 (231)
Agricultural Science	Doctoral Program	32 (17)

Diploma Course for Graduate Students

Diploma Course	Major	Total
Advanced Course for Special Support Education	Education for Children with Intellectual Disabilities	19 (14)

Admission to Ibaraki University (Academic Year of 2018)

Colleges

As of May 1, 2019

Colleges	The Number of Applicants	Enrollment
Humanities and Social Sciences	1,950	377
Education	1,314	288
Science	788	224
Engineering	2,806	562
Agriculture	403	165
Total	7,261	1,616

Graduate Schools

As of May 1, 2019

Graduate Schools	Programs	The Number of Applicants	Enrollment
Humanities and Social Sciences	Master's Program	55	23
Education	Master's Program	55	33
	Professional Degree Program	18	16
Engineering	Master's Program	475	407
	Doctoral Program	16	15
Agriculture	Master's Program	39	35
Total		658	529

Diploma Course for Graduate Students

As of May 1, 2019

Diploma Course	Major	The Number of Applicants	Enrollment
Advanced Course for Special Support Education	Education for Children with Intellectual Disabilities	21	19

Number of Graduates

Undergraduates

Academic Year of 2018

Colleges	Departments	Total	Sum Total
Humanities	Social Sciences	164	387
	Humanities and Communication Studies	223	
Education	Teacher Training Course	232	373
	Course for School Nurse Teacher	37	
	Course for Information and Culture	61	
	Course for Human Environmental Education	43	
Science	Sciences	209	209
Engineering	Mechanical Engineering	101	518
	Biomolecular Functional Engineering	60	
	Materials Science & Engineering	38	
	Electrical and Electronic Engineering	77	
	Media and Telecommunications Engineering	53	
	Computer and Information Sciences	56	
	Urban and Civil Engineering	52	
	Intelligent Systems Engineering	48	
	Intelligent Systems Engineering(B)	33	
	Agriculture	Biological Production Science	
Bioresource Science		34	
Regional Environmental Science		36	
Sum Total			1,603

Graduates with Degrees Conferred

Academic Year of 2018

Graduate Schools	Programs	Total
Humanities and Social Sciences	Master's Program	31
Education	Master's Program	43
	Professional Degree Program	16
Science and Engineering	Master's Program	341
	Doctoral Program	28
Agriculture	Master's Program	34
Sum Total		493

Graduates with Diploma Received from Special Field

Academic Year of 2018

Advanced Course for Special Support Education	25
---	----

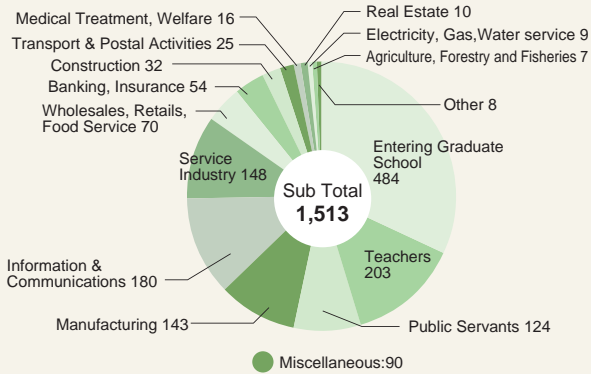
Graduates with Diploma Received

Academic Year of 2018

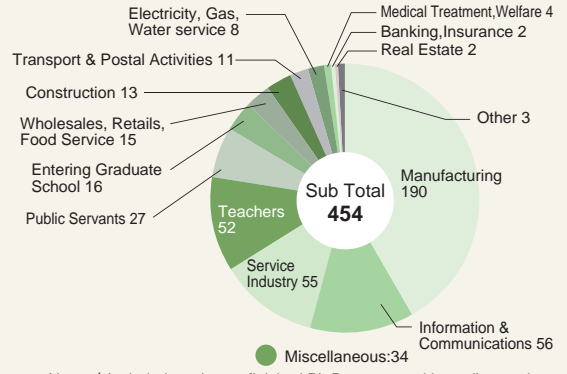
	Programs	Theses	Sum Total	Cumulative Total
Graduate Schools	Doctor	19	19	705
	Master	431	—	431
United Graduate School of Agricultural Science (Ibaraki University Students)	7	0	7	300

Major Fields of Employment of Graduates

Undergraduates(Academic Year 2018) Sum Total 1,603

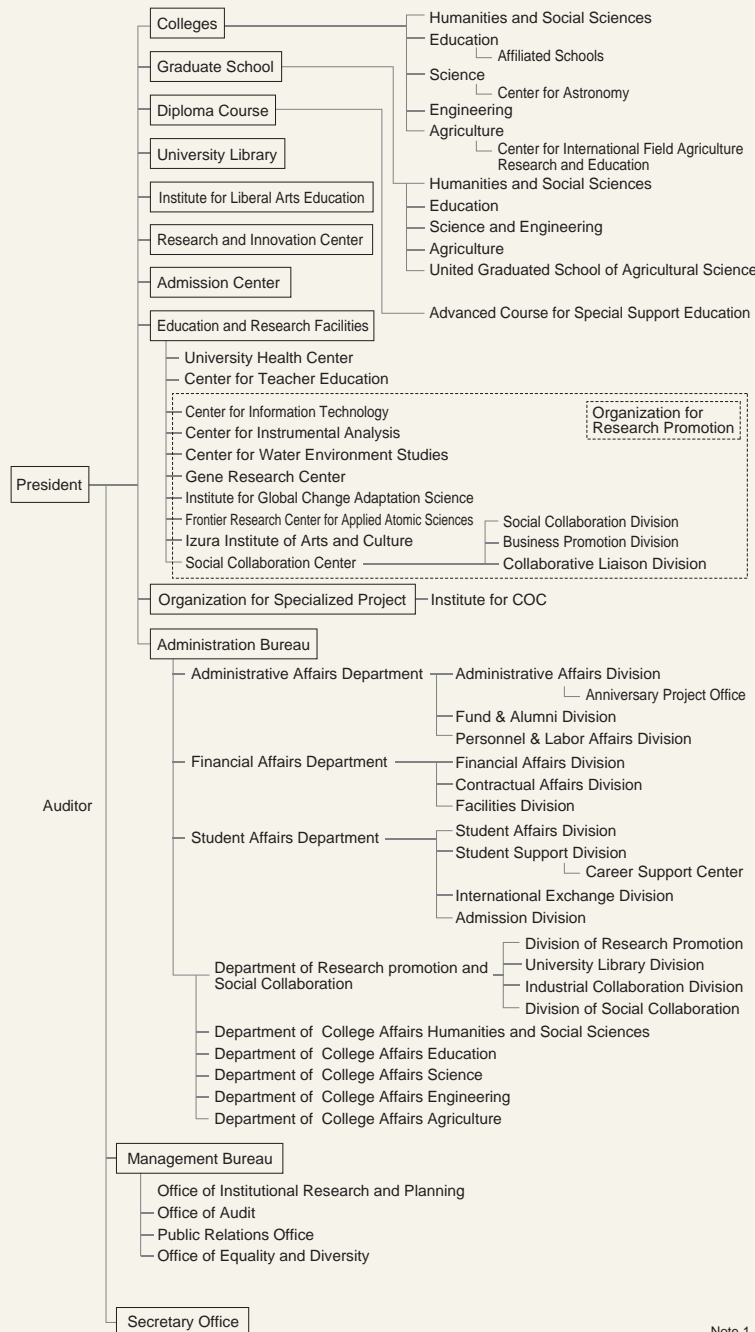


Graduates*(Academic Year 2018) Sum Total 488



Note: *Included graduates finished Ph.D program without dissertation.

Organization



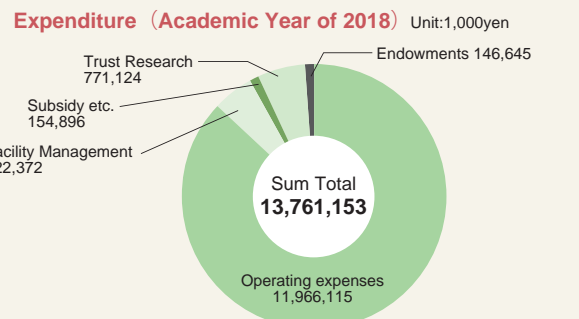
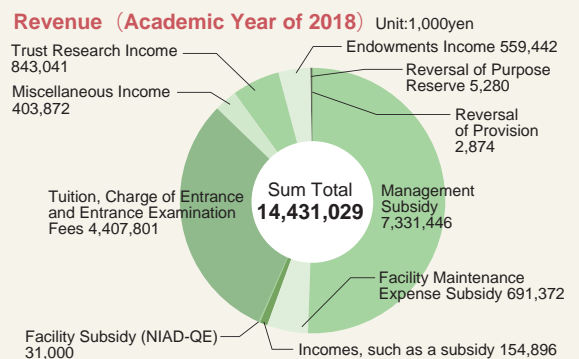
Number of Staff

As of May 1, 2019

Classification	Executives	Professor	Associate Professor	Lecturer	Assistant Professor	Institutional Assistant	School Teachers	Clerical Staff	Total
Executives	7(1)								7(1)
Administration								251(86)	251(86)
College of Humanities & Social Sciences		48(10)	25(8)	5(2)	1	3(1)			82(21)
College of Education		61(12)	31(6)	5(3)	7(3)			87(43)	191(67)
College of Engineering								22(1)	22(1)
Graduate School of Education			1	2(1)					4(1)
Graduate School of Science & Engineering (Science)		44(2)	23(5)			3			70(7)
Graduate School of Science & Engineering (Engineering)		72(1)	52(1)	21(4)	18(2)				163(8)
Agriculture		33(1)	18(2)	1	5(2)				57(5)
Institute for Liberal Arts Education		8(3)	11(2)	7(5)	2				28(10)
Research & Innovation Center				1					1
Education & Research Facilities		5(1)	6	1	7(1)			19(7)	38(9)
Total	7(1)	272(30)	168(24)	42(15)	43(8)	3(1)	87(43)	292(94)	914(216)

Note: The figures in parentheses indicate the number of female staff.

Finances



Note 1 If the amount includes a fraction of less than one thousand yen, it shall be rounded down.
 Note 2 NIAD-QE: National Institution for Academic Degrees and Quality Enhancement of Higher Education.

Facts & Figures

Number of International Students

As of May 1, 2019

Countries/Area	Colleges						Graduate Schools					Sum Total
	Humanities and Social Sciences	Education	Science	Engineering	Agriculture	Total	Humanities and Social Sciences	Education	Science and Engineering	Agriculture	Total	
China	21 (14)	4 (3)	9 (3)	53 (9)	11 (6)	98 (35)	31 (18)	1 (1)	63 (15)	5 (2)	100 (36)	198 (71)
Taiwan	2 (2)		2	1		5 (2)		1 (1)			1 (1)	6 (3)
Hong kong			1			1						1
Korea	7 (3)		5 (2)	3 (1)	1 (1)	16 (7)						16 (7)
Russia	1 (1)					1 (1)						1 (1)
Montenegro									1		1	1
Malaysia				26 (7)		26 (7)			1		1	27 (7)
Peru	1 (1)	1		1 (1)		3 (2)						3 (2)
Vietnam	2 (2)		2 (1)	3	2 (2)	9 (5)	1 (1)				1 (1)	10 (6)
Brunei Darussalam	2 (1)					2 (1)						2 (1)
Bulgaria	1 (1)					1 (1)						1 (1)
Brazil	1 (1)					1 (1)						1 (1)
Bangladesh									1 (1)		1 (1)	1 (1)
Pakistan				2		2			1		1	3
Nepal									1 (1)		1 (1)	1 (1)
Thailand	5 (5)					5 (5)				2 (2)	2 (2)	7 (7)
Cameroon									1		1	1
Kazakhstan	1 (1)					1 (1)						1 (1)
Egypt									1		1	1
Indonesia	4 (2)			1		5 (2)			3	18 (9)	21 (9)	26 (11)
Iran									7 (2)		7 (2)	7 (2)
USA	1					1						1
Sum Total	49 (34)	5 (3)	19 (6)	90 (18)	14 (9)	177 (70)	32 (19)	2 (2)	80 (19)	25 (13)	139 (53)	316 (123)

Note: The figures in parentheses indicate the number of female students.

Number of Students Studying Abroad

Academic Year of 2018

Classification	Colleges						Graduate Schools					Sum Total
	Humanities and Social Sciences	Education	Science	Engineering	Agriculture	Total	Humanities and Social Sciences	Education	Science and Engineering	Agriculture	Total	
Foreign Exchange	14	2	3		1	20	0	0	0	0	0	20
Overseas Study Tour	86	23	10	28	23	170	8	2	6	8	24	194
AIMS Program			1	0	14	15	0	0	0	0	0	15
Internship		2		0	6	8	0	0	8	0	8	16
Sum Total	100	27	14	28	44	213	8	2	14	8	32	245

Overseas Travel of Ibaraki University Staff

Academic Year of 2018

Region	Supplier of Expenses	President-Vice President-Executive	Humanities and Social Sciences	Education	Science	Engineering	Agriculture	Institute for Liberal Arts	Education and Research Facilities	Management Bureau	Sum Total
Asia		3	26	10	24	34	27	11	25	9	169
Europe			35	10	15	41	5	6	3		115
Middle and Near East		0	1	0	1	1					3
North America		1	13	4	12	29	4	1	1	2	67
Latin America			2	1	2	1					6
Africa			0	1							1
Oceania			3	1	4	11	2	1	2		24
Sum Total	4	80	27	58	117	38	19	31	11	385	

Visiting Scholars from Abroad

Academic Year of 2018

Countries/Area	Total
Indonesia	5
India	6
Thai	8
Vietnam	8
Korea	1
Taiwan	3
China	5
Egypt	2
Australia	5
Germany	3
France	4
Colombia	2
USA	8
Sum Total	60